

Drawing

Data Layers

Evaluation

Areas of Interest

SELECT

Lodi American Viticult... ✓

NAME

Lodi American Viticultural Area

The Lodi AVA is the "heart" of current District 4. Please DO NOT dilute its voice on the Board by splitting it up with more urban areas south, ie north Stockton. Common concerns are agriculture (obviously), as well as the economic / social / cultural values that go

These details are updated automatically

Important Places



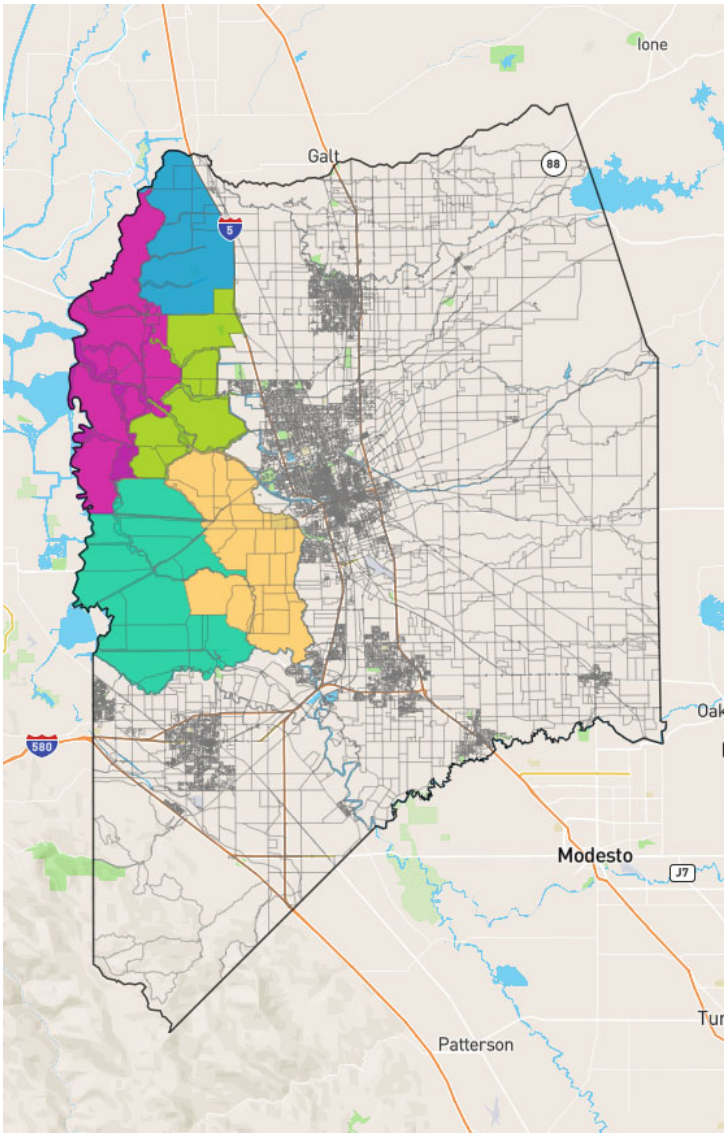
Communities of Interest

● Lodi American Viticultural Area

The Lodi AVA is the "heart" of current District 4. Please DO NOT dilute its voice on the Board by splitting it up with more urban areas south, ie north Stockton. Common concerns are agriculture (obviously), as well as the economic / social / cultural values that go along with it; also development restrictions, water rights, pesticide use, cannabis regs, etc. We understand that SOME adjustment may be needed to D4 to account for changes in population, but please try to preserve at least the AVA "heart" as whole.

● Lodi AVA west of I5

(first see description of primary Lodi AVA area) The portion of Lodi AVA west of I5 should terminate roughly along the line where White Slough runs north-south at King Island Marina, but there wasn't enough detail to do that, so the west portion was drawn as a separate part, extending it all the way out to county line along Little Potato Slough, including Terminous and the wildlife refuge.



Drawing

Data Layers

Evaluation

Areas of Interest

SELECT

delta NON community ✓

NAME

delta NON community

i think the delta area should NOT be put in a single district. i think it'd be better if SEVERAL districts had a VESTED interest in the area. there's not enough people living there otherwise for water issues. the colored areas are meaningless, just to show having a couple DIFFERENT

These details are updated automatically

Important Places

Communities of Interest

 **delta NON community**

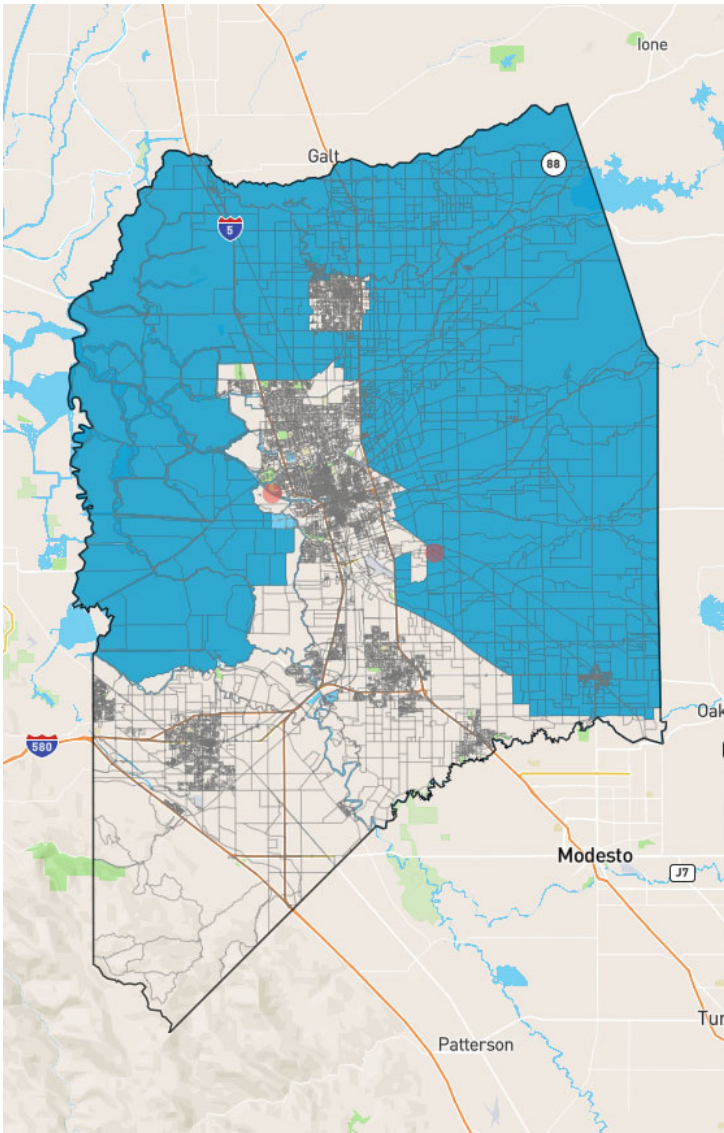
i think the delta area should NOT be put in a single district. i think it'd be better if SEVERAL districts had a VESTED interest in the area. there's not enough people living there otherwise for water issues. the colored areas are meaningless, just to show having a couple DIFFERENT districts in the OVERALL area

 **Community 2**

 **Community 3**

 **Community 4**

 **Community 5**



Drawing

Data Layers

Evaluation

▼ Areas of Interest

SELECT

Community of Agricult.. ✓

NAME

Community of Agriculture

Community of Agriculture.
 This is a collective of rural areas that are interwoven by shared resources. Public schools, places of worship, local business, and employment. The County is the 7th Largest producer of Agriculture. The gross value of production for 2019 was

These details are updated automatically

▼ Important Places



SELECT

PORT DEEP-WATER ✓

PLACE NAME

PORT DEEP-WATER 

Port of Stockton is a major deepwater port. Warehouse storage and handling facilities for both dry and liquid bulk materials. Handled 4.74 million metric tons of cargo in 24 different commodities in 2018. Proposed project development of a new warehouse building and

Communities of Interest

● Community of Agriculture

Community of Agriculture.

This is a collective of rural areas that are interwoven by shared resources. Public schools, places of worship, local business, and employment. The County is the 7th Largest producer of Agriculture. The gross value of production for 2019 was \$2,617,815,000. Total # of Farms 3,430(2017 Census). Unincorporated Cities: Acampo, Collierville, Farmington, French Camp, Lockeford, Morada, Thornton, Victor, Waterloo, Woodbridge, Linden.

Important Places

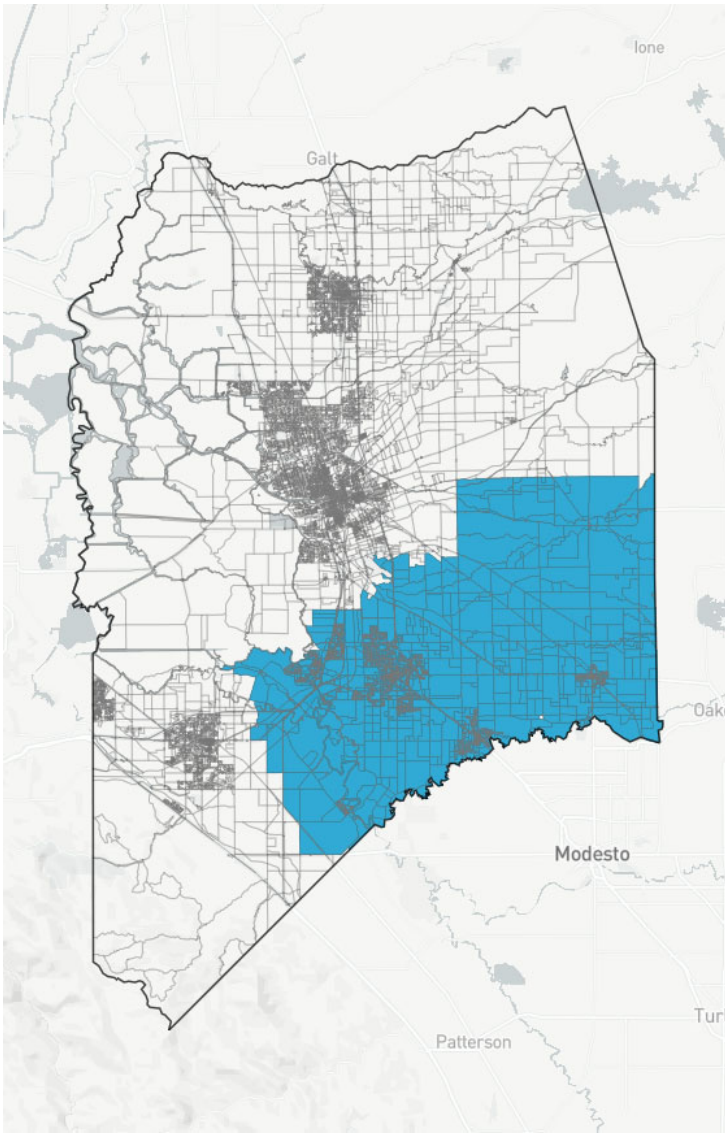
PORT DEEP-WATER

Port of Stockton is a major deepwater port. Warehouse storage and handling facilities for both dry and liquid bulk materials. Handled 4.74 million metric tons of cargo in 24 different commodities in 2018. Proposed project development of a new warehouse building and associated infrastructure over approximately 60 acres of the Port's West Complex.

BNSF Mariposa Yard, Intermodal Facility

Open 24 hours, 7 days a week.

7,000 feet of loading and unloading track and approximately 300 truck/container parking stalls.



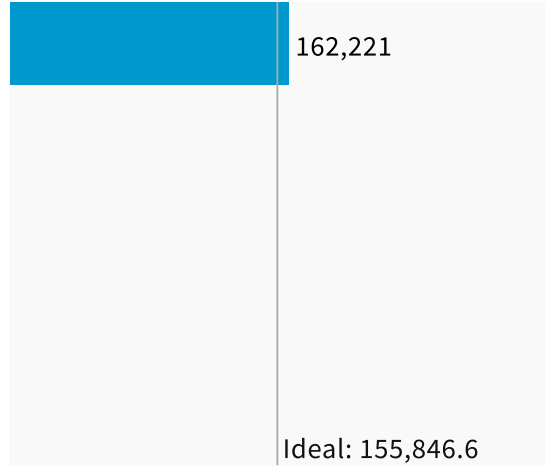
Population

Data Layers

Evaluation

Population Balance

① Uses 2020 Decennial Census population with processing by Redistricting Partners on 2020 Blocks.



UNASSIGNED POPULATION:	617,012
MAX. POPULATION DEVIATION:	4.09%