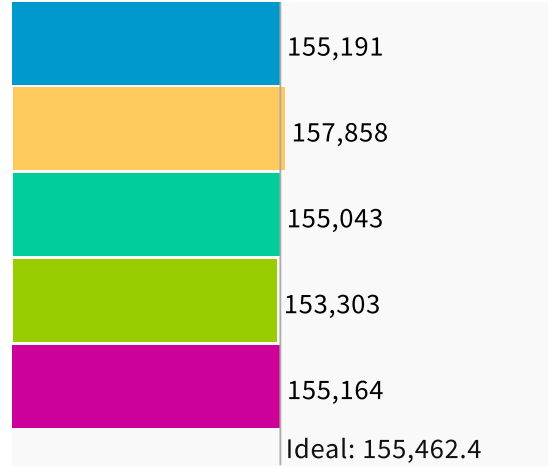


Population | Data Layers | Evaluation

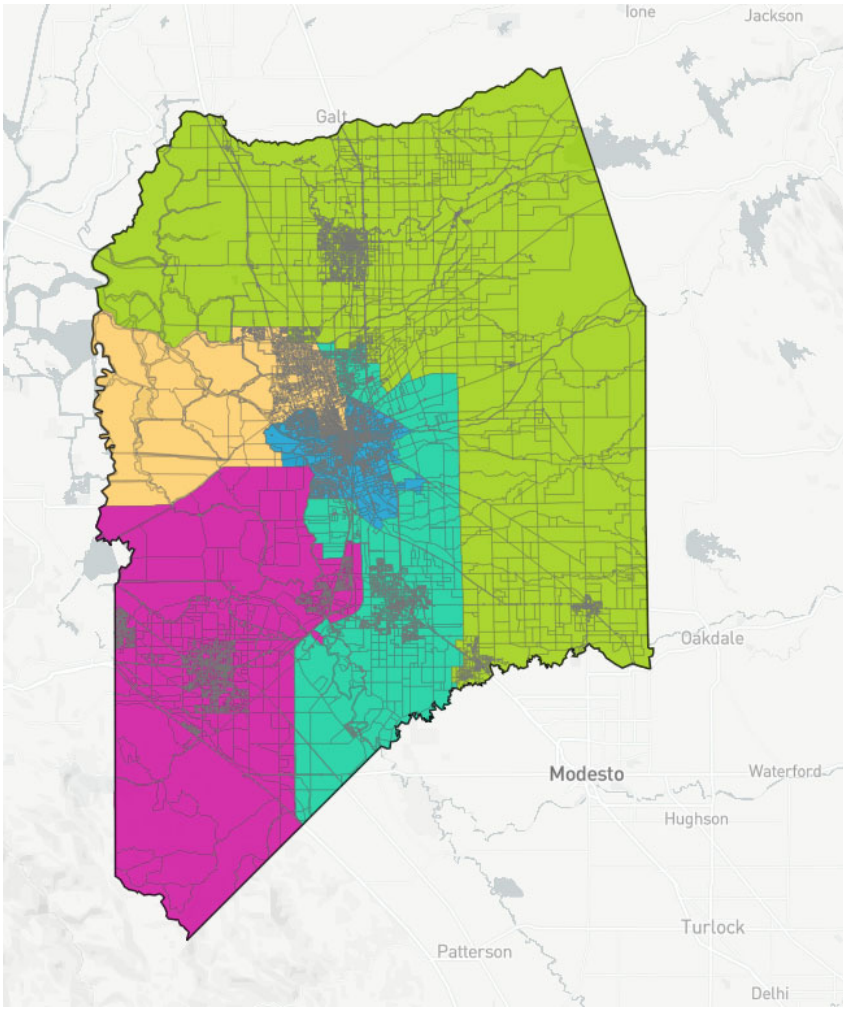
Population Balance

① Uses 2020 Decennial Census population with processing by Redistricting Partners on 2020 Blocks.



UNASSIGNED POPULATION: 753

MAX. POPULATION DEVIATION: 1.54%



Population Data Layers Evaluation

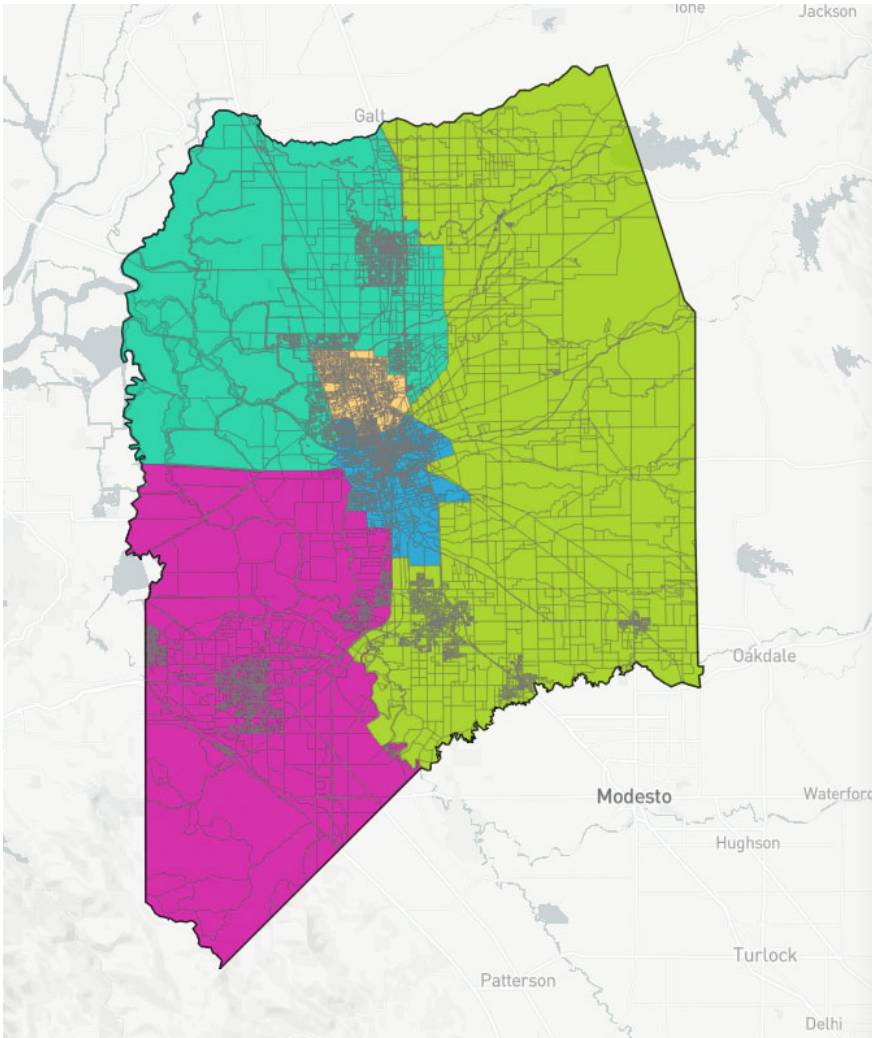
Population Balance

① Uses 2020 Decennial Census population with processing by Redistricting Partners on 2020 Blocks.

| | |
|------------------|---------|
| Blue | 155,493 |
| Orange | 155,490 |
| Green | 155,438 |
| Light Green | 155,444 |
| Magenta | 155,447 |
| Ideal: 155,462.4 | |

UNASSIGNED POPULATION: 0

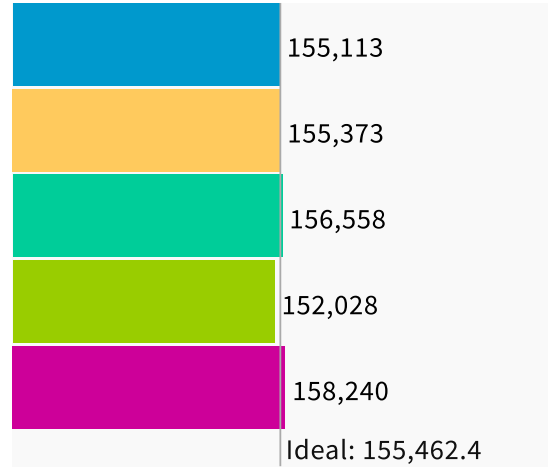
MAX. POPULATION DEVIATION: 0.02%



Population | Data Layers | Evaluation

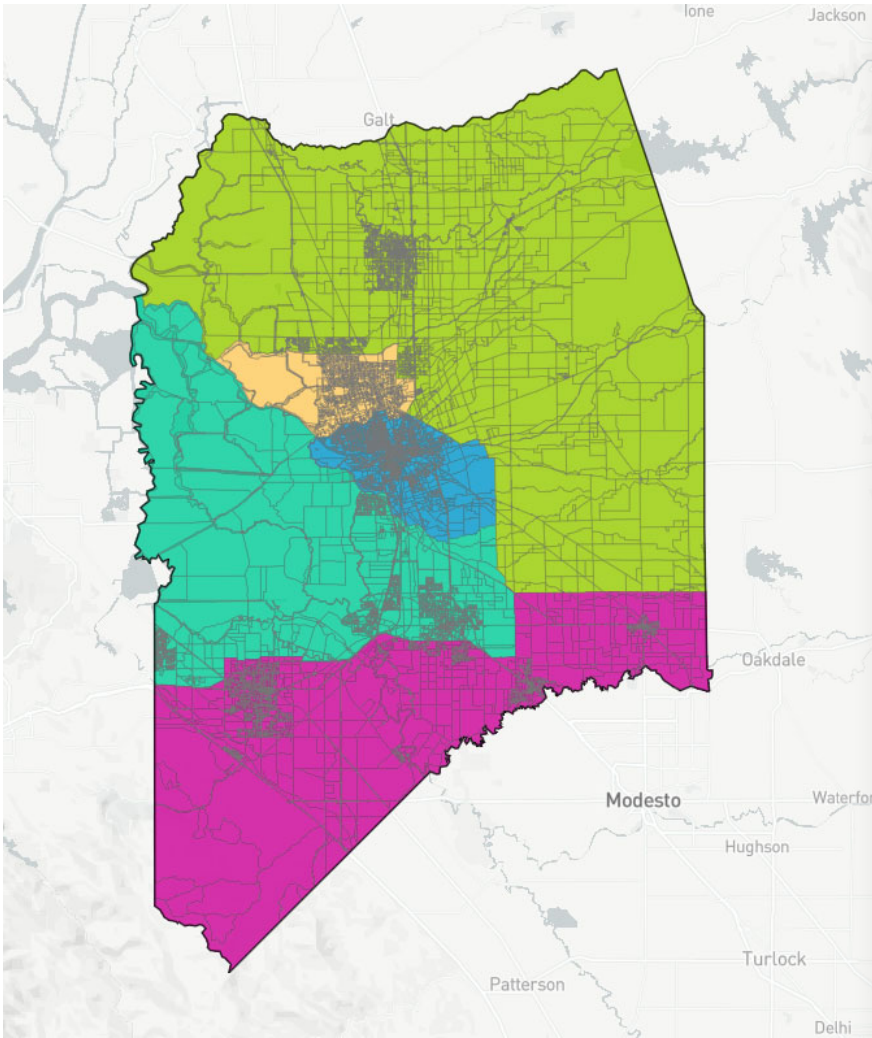
Population Balance

① Uses 2020 Decennial Census population with processing by Redistricting Partners on 2020 Blocks.



UNASSIGNED POPULATION: 0

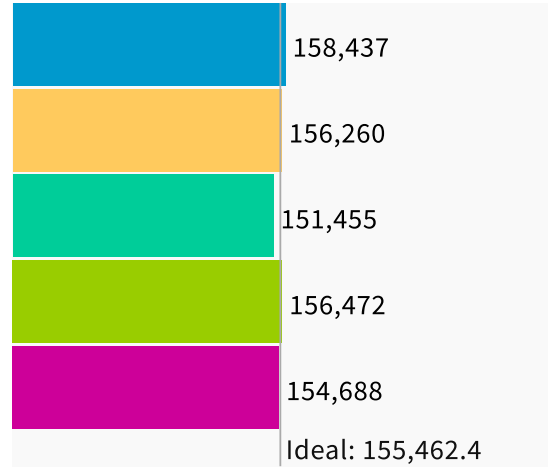
MAX. POPULATION DEVIATION: 2.21%



Population Data Layers Evaluation

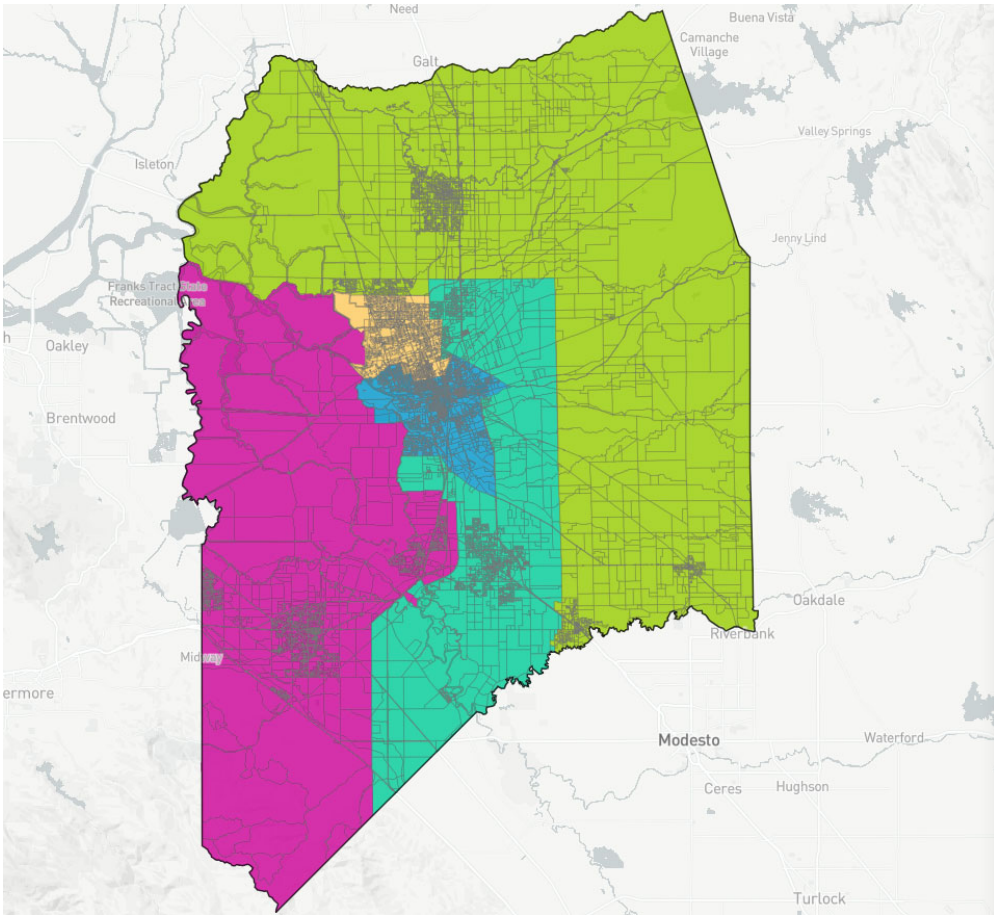
Population Balance

① Uses 2020 Decennial Census population with processing by Redistricting Partners on 2020 Blocks.



UNASSIGNED POPULATION: 0

MAX. POPULATION DEVIATION: 2.58%



Population | Data Layers | Evaluation

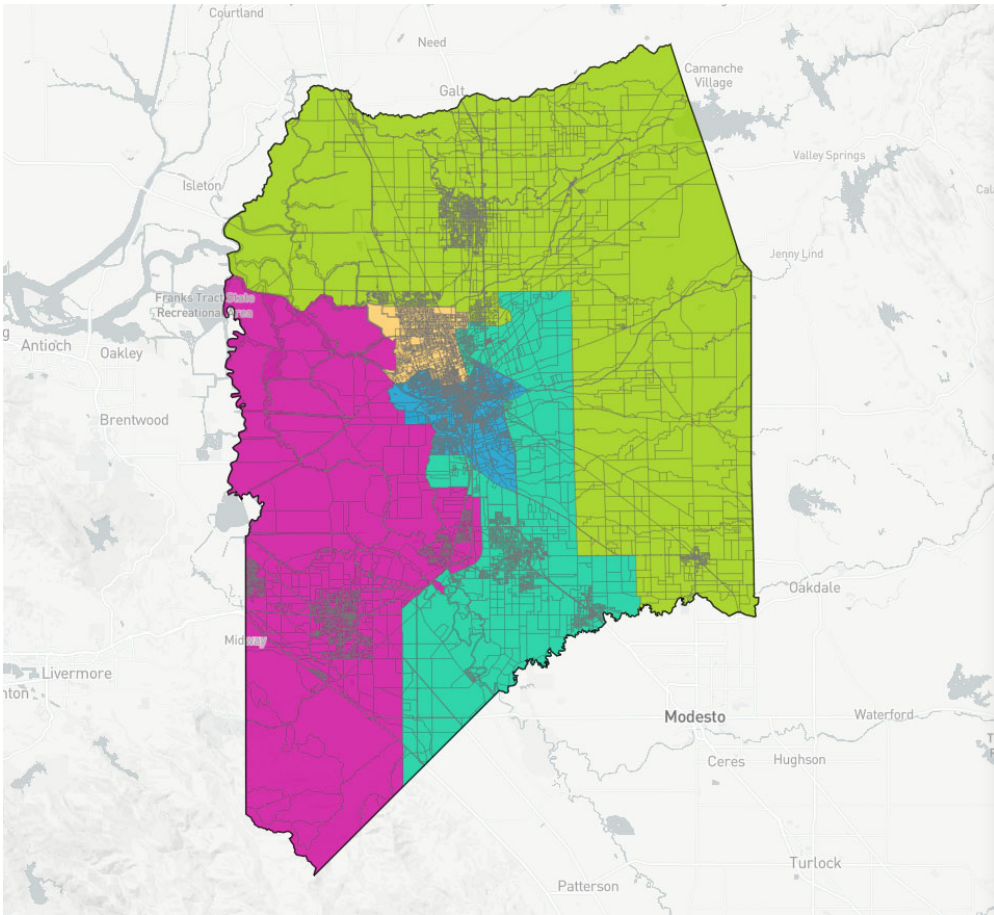
Population Balance

ⓘ Uses 2020 Decennial Census population with processing by Redistricting Partners on 2020 Blocks.

| | |
|------------------|---------|
| | 155,471 |
| | 154,908 |
| | 154,389 |
| | 156,537 |
| | 156,007 |
| Ideal: 155,462.4 | |

UNASSIGNED POPULATION: 0






MAX. POPULATION DEVIATION: 0.69%



Population | Data Layers | Evaluation

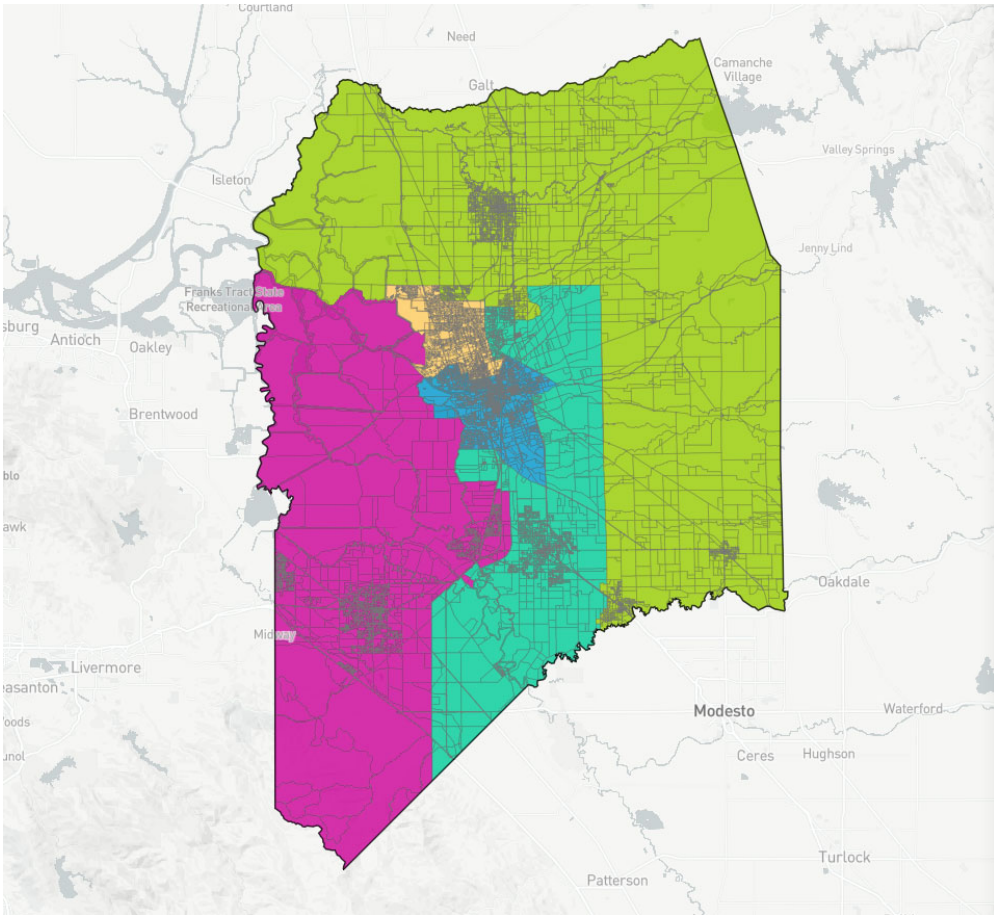
Population Balance

ⓘ Uses 2020 Decennial Census population with processing by Redistricting Partners on 2020 Blocks.

| | |
|---|---------|
|  | 155,471 |
|  | 153,276 |
|  | 156,783 |
|  | 155,775 |
|  | 156,007 |
| Ideal: 155,462.4 | |

UNASSIGNED POPULATION: 0



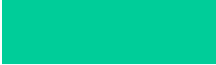


MAX. POPULATION DEVIATION: 1.41%



Population Data Layers Evaluation

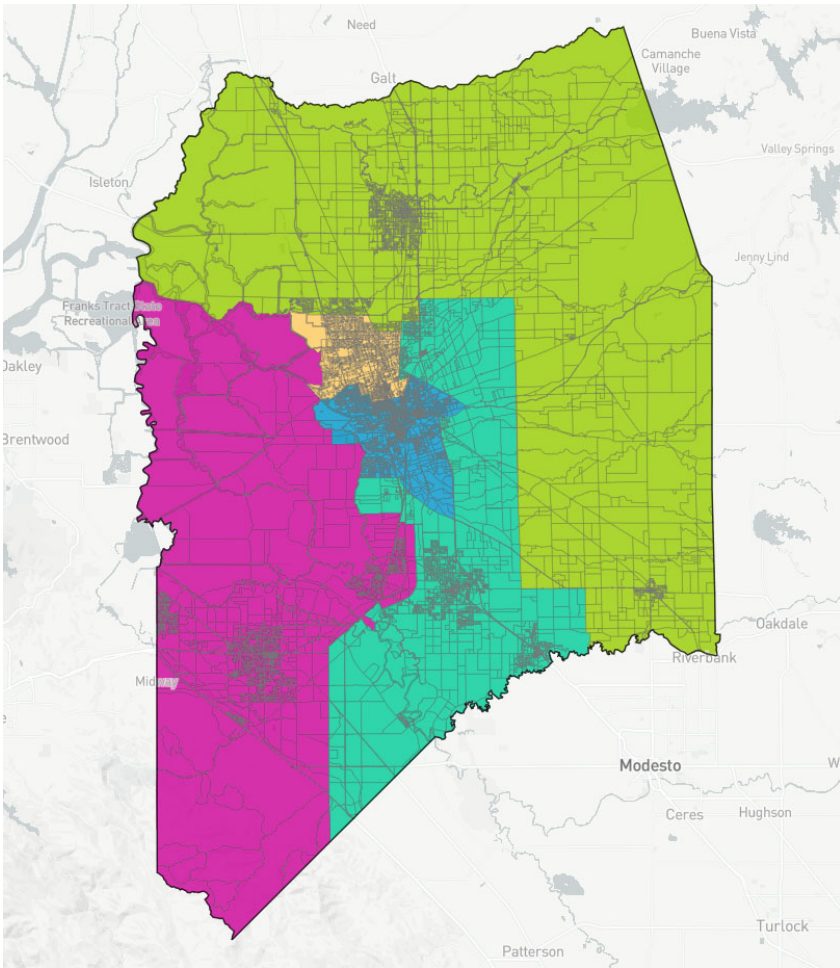
Population Balance

ⓘ Uses 2020 Decennial Census population with processing by Redistricting Partners on 2020 Blocks.

| | |
|---|---------|
|  | 155,471 |
|  | 155,455 |
|  | 155,395 |
|  | 154,984 |
|  | 156,007 |
| Ideal: 155,462.4 | |

UNASSIGNED POPULATION: 0






MAX. POPULATION DEVIATION: 0.35%



Population | Data Layers | Evaluation

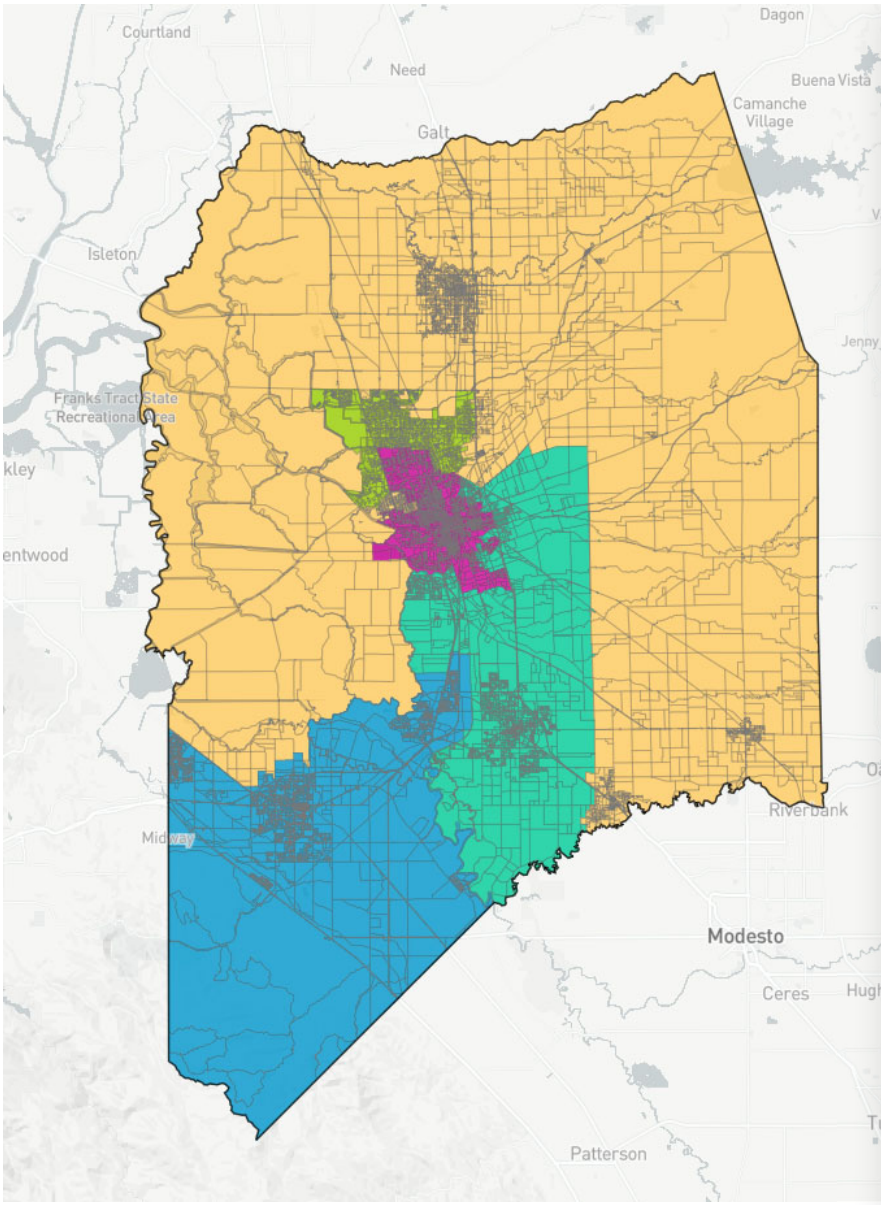
Population Balance

ⓘ Uses 2020 Decennial Census population with processing by Redistricting Partners on 2020 Blocks.

| | |
|---|------------------|
|  | 155,471 |
|  | 154,055 |
|  | 155,225 |
|  | 156,554 |
|  | 156,007 |
| | Ideal: 155,462.4 |

UNASSIGNED POPULATION: 0

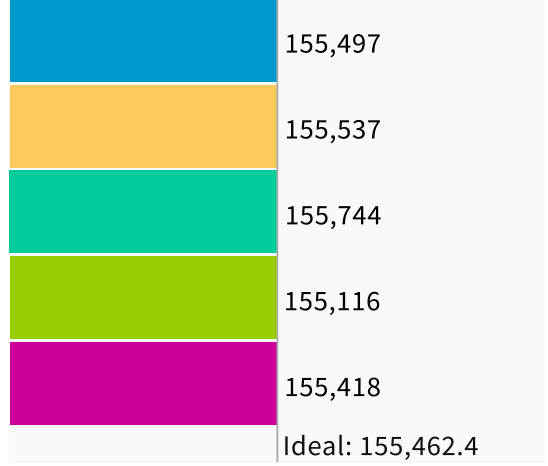
MAX. POPULATION DEVIATION: 0.91%



Population Data Layers Evaluation

Population Balance

① Uses 2020 Decennial Census population with processing by Redistricting Partners on 2020 Blocks.



UNASSIGNED POPULATION: 0

MAX. POPULATION DEVIATION: 0.22%